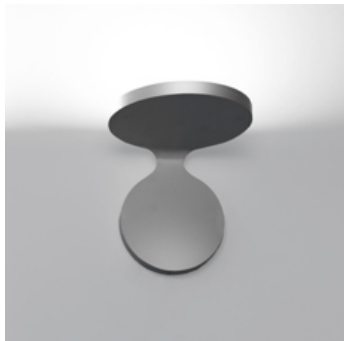


PRODUCT DATA SHEET

Rea 17 - Wall - Titanium - 15W LED



DESIGN BY :

NeilPoulton
2013

MATERIALS :

Aluminium

DESCRIPTION :

"Rea is a little reflection of itself, a bending splitting amoeba. Or maybe the Enterprise from Star Trek, if designers were still allowed to be influenced by childhood dreams". Neil PoultonA decisive yet soft gesture summarizes this small wall lamp, available in two sizes (120 e 170mm). two equal and perpendicular discs act as wall support and host the LED optics, which diffuse indirect light with a 90% performance level.

Light emission



IP 20

TECHNICAL DATA SHEET

FEATURES

Product name:	Rea 17 - Wall - Titanium - 15W LED
Article Code:	1615060A
Colour:	Titanium
Material:	Aluminium
Series:	Design
Environment:	Indoor

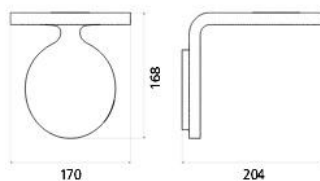
DIMENSIONS

Length:	cm 17
Width:	cm 20.4
Height:	cm 16.8
Cutout shape:	

LAMPS INCLUDED

Category:	LED
Watt:	28
Luminous Flux (lm):	1800
Typology:	2
Color temperature (K):	3000
Class:	A

DIMENSIONS



LAMP

IP 20

LUMINAIR

Watt: 15W